



GLENUNGA
INTERNATIONAL
HIGH SCHOOL



2025 UNIFORM POLICY

YEAR 12



OUR UNIFORM

Students and families understand that enrolling at Glenunga means a requirement to wear our school uniform correctly and with pride. How a student wears their uniform signals their commitment to inclusion in our Glenunga community, and particularly to our school Values of Excellence^{PB} and Harmony.

Our uniform contains a range of options to suit all ages and body shapes. Student feedback has shaped additions and changes to the uniform over the years.

KEY REQUIREMENTS

The following pages outline key uniform requirements of the Year 12 uniform.

- The skirt and summer dress finish on the kneecap for all year levels. Legs of the shorts are not rolled up. The skirt waistband is not rolled up. The summer dress belt is not tied up or pinned.
- Navy or grey school pants or navy shorts can be worn.
- Clean black leather shoes are the only acceptable shoes to be worn with the uniform. They need to have reasonable sized straps, black laces, buckles and a defined heel and sole for support. Any other footwear will be considered non-uniform and will need to be replaced. Ankle boots are not part of school uniform.
- Athletic or running shoes are worn with the sports uniform and not with any other uniform pieces.

- Jackets or t-shirts related to school positions e.g. house captain can be worn as part of the school uniform. Subject tops e.g. aviation, HPE are only worn on the days these subjects are undertaken.
- Navy or white socks are to finish above the ankle and are not to have any visible logos or branding.
- No visible makeup, nail polish, necklaces, bracelets, ankle chains, or piercings are to be worn. Students can choose to wear earrings as long as they do not dangle below the ear.
- Only 'natural' hair colour and no bald heads (unless exemption has been given).
- Head scarves in plain blue or white worn for religious reasons are part of the school uniform.

Uniform Provider

Our uniform provider is Brandmode (www.brandmode.com.au). All uniform items must be official Glenunga International High School uniform as displayed and sold at our uniform provider's retail outlet. More information about Brandmode can be found on page 8.

Exemptions

If you would like to request an exemption for your student to wear religious jewellery or have religious piercings please email our Principal at Wendy.Johnson722@schools.sa.edu.au. These items need to be approved prior to the student wearing them to school. Students who put their individual wants above our community expectations

UNIFORM ITEMS

spend their lesson time in The Pod until they are able to deliver on these requirements.

Wearing of Uniform Between School and Home

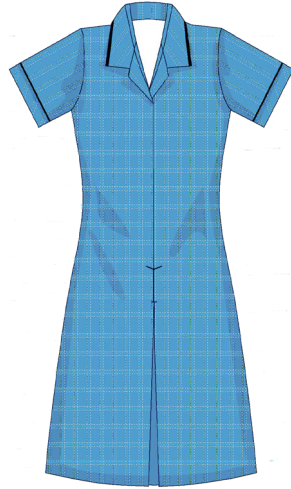
Glenunga is proud of its image in the community and an important part of this image is the correct wearing of our school uniform. All students wear the full school uniform, including the school shoes, shirts and tops according to the season. Non-regulation jackets, shoes and pants are not permitted.

All our uniform items are non-gendered and non-seasonal so they can be worn all year round.

Rugby Top, Navy Jumper, Soft Shell Jacket or vest and Rain Jacket are optional uniform items that your student can choose to wear over the top of their shirt or polo top.



SHOES



SUMMER DRESS



SHORTS



NAVY PANTS



LONG SLEEVE SHIRT



GREY PANTS



SHORT SLEEVE SHIRT



SKIRT



RUGBY TOP



NAVY JUMPER



RAIN JACKET



LONG-SLEEVED POLO SHIRT



PUFFER JACKET

SPORTS UNIFORM

Our Health and Physical Education (sports) uniform includes a sports shirt, sports shorts, navy hat and navy socks. Athletic or running shoes are to be worn with the sports uniform and not with any other uniform pieces.

Students are permitted to wear their correct sports uniform to school on days where they have Health and Physical Education during first lesson only. After the lesson students need to change back into their school uniform. If Physical Education is the last lesson of the day, students may wear their correct sports uniform home.

Some elective extracurricular sports have a individual uniform. Please contact the Director of Sports Craig.Rainsford899@schools.sa.edu.au for specific details regarding these uniform requirements.



SPORTS SHIRT



SPORTS SHORTS



TRACK PANTS

UNIFORM ACCESSORIES

Hats

The Glenunga branded hat pictured below is the only one students can choose to wear with their uniform. Please note that a hat is required to be worn with the Health and Physical Education uniform while undertaking these lessons.

Tie

The tie is only to be worn with the shirt and needs to be fastened correctly with the top button done up.

School Bag

This Glenunga branded school bag is a part of the school's uniform and students are encouraged to use this bag.

Blazer

The blazer is an optional uniform item that your student can choose to purchase and wear.

Socks

Navy or white socks that finish above the ankle are the only sock permitted. These socks are not to have any visible logos or branding.



TIE



SCHOOL BAG



SOCKS

HAT



BLAZER

BRANDMODE

Contact details

Retail Address

83 Glen Osmond Road,
Eastwood, SA 5063

Phone

8357 0022

Website

brandmode.com.au

Email

sales@brandmode.com.au

GLENUNGA INTERNATIONAL HIGH SCHOOL

Contact details

Retail Address

99 L'Estrange Street
Glenunga 5064 SA

Phone

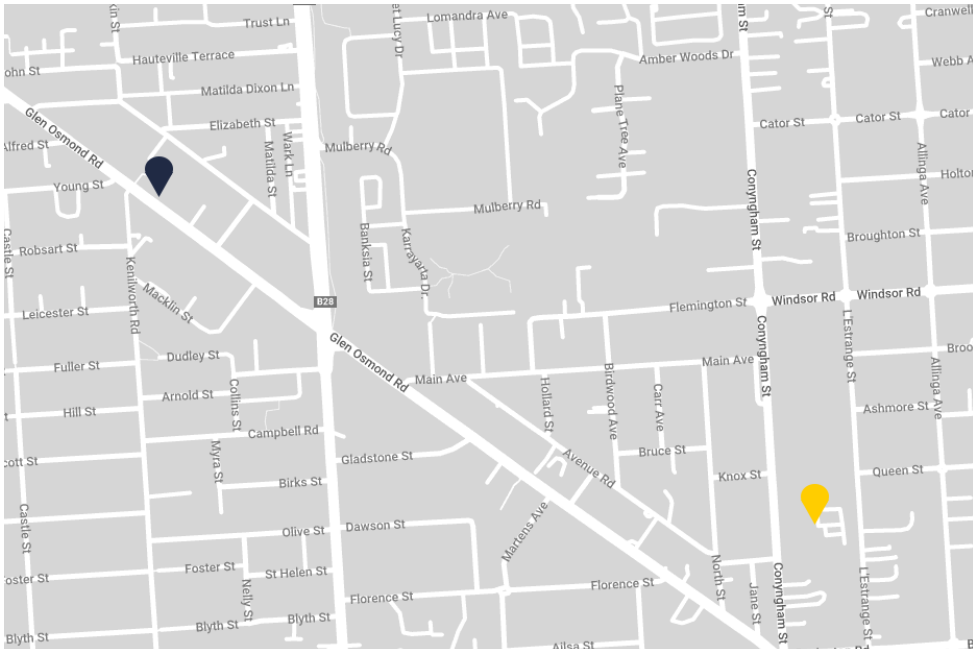
8379 5629

Website

gihs.sa.edu.au

Email

glenunga@gihs.sa.edu.au



Key



Brandmode



Glenunga International High School