

| Concern | First Level of Responsibility | Second Level of Responsibility |
|--|--|---|
| Wellbeing, attendance, behaviour | Mentor Teacher Wellbeing Team | Sub School Leader (see below table) Assistant Principal: Wellbeing and Inclusion |
| Assignments, progress, achievement | Subject Teacher | Learning Area Leader (see below table) Sub School Leader (see below table) |
| Quality of teaching or learning | Subject Teacher Learning Area Leader, Principal | Principal Principal |
| Subject offerings Futures Focussed Pathway Planning | Sub School Leader | Director of Studies |

| Year | Sub School Leaders | Executive Leader | Sub School Assistants |
|------|---|---|--|
| 7 | Meredith Lawson Travis Gerace | Paul Mildren | N/A |
| 8 | Kyra Staak | Andrew Smith | Jessie O'Brien |
| 9 | Juliet Ankers | Rebecca Fuss | Michael Taylor |
| 10 | Ellen Morey (Term 1) Nikita DeGregorio (Terms 2 – 4) | Fern Hudson | Ellen Morey (Term 2 – 4) |
| 11 | Ivanka Ivka | Diana Pruszkowski | Daniel Jung |
| 12 | Erin Papps | Michael Holmes , Nick Fowler | N/A |

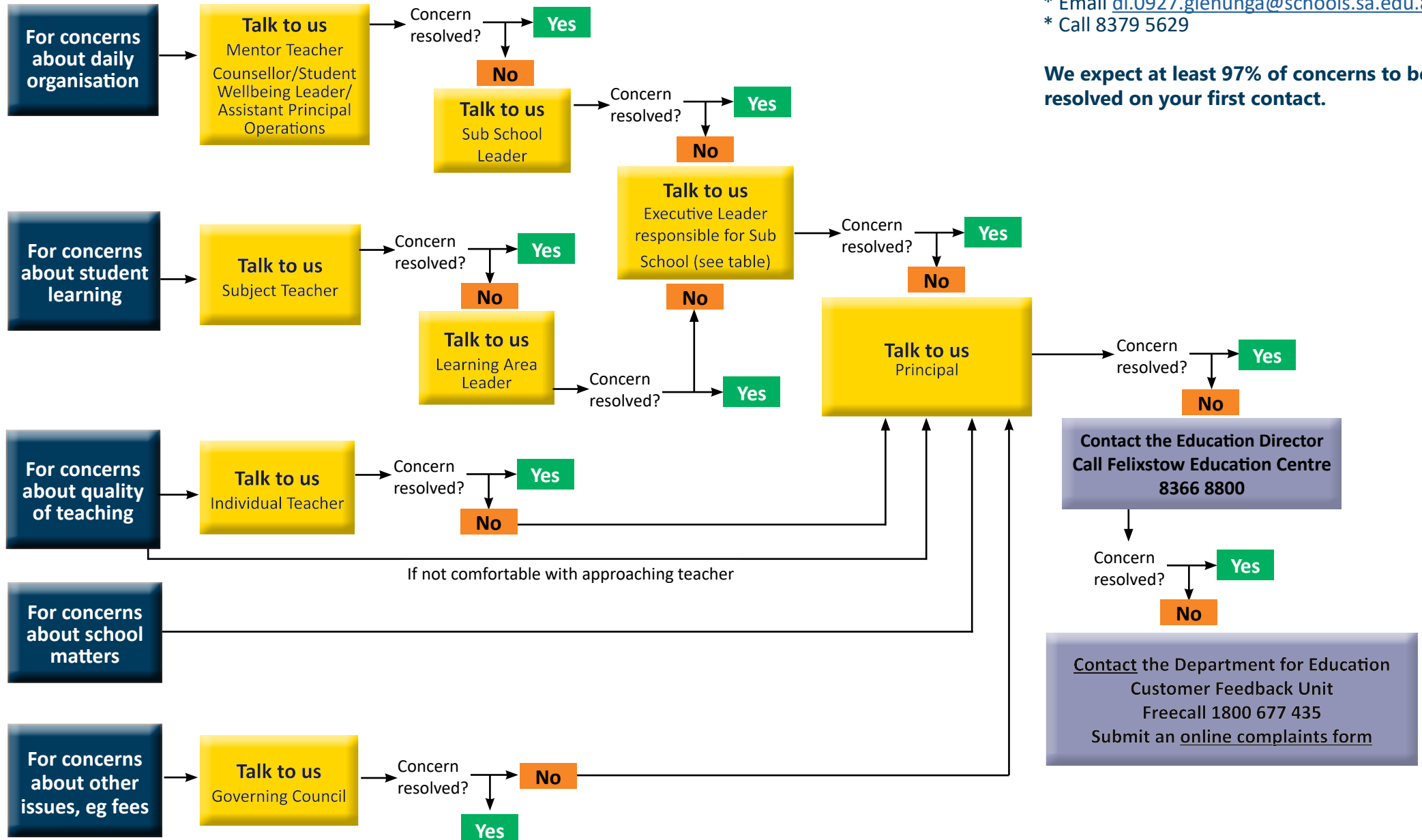
Learning Area Leaders

| | |
|---|---|
| Leader Arts Teacher Leader Executive Connector | Rosetta Mastrantone Maria Bilske Diana Pruszkowski |
| Senior Leader English / EALD Teacher Leader English Teacher Leader EALD; ISEC & Study Tour Executive Connector | Abby Davey Stephanie Dent Michelle Webster Justine Ellis |
| Leader Health and Physical Education Teacher Leader Executive Connector | Jovana Petrov Liam Davies Paul Mildren |
| Leader Humanities Teacher Leader Humanities Executive Connector | Rowan Vawser Kyle Fontanabella Nick Fowler |
| Leader Languages Executive Connector | April Bunton and Celia Haumesser Michael Holmes |
| Leader Mathematics Teacher Leader Mathematics Executive Connector | Adele Button and Nevena Sloan Isaac Davis Rebecca Fuss |
| Senior Leader Science Teacher Leader Science Executive Connector | Paul Beneke Renee Wilks Andrew Smith |
| Leader Technologies Executive Connector | Michelle Payne Fern Hudson |

Wellbeing Team

| | |
|---|---|
| Leader The Pod / Inclusive Education Teacher Leader The Pod / Inclusive Education Executive Connector | Jaimie Holland Annie Siegmann Fern Hudson |
| Student Wellbeing Leaders Executive Connector | Jessica Curnow , Andrea Feldhoff , Lachlan Shields Fern Hudson |

Concerns & Resolutions Flowchart



Talk to us

- * Email the mentor teacher or subject teacher
- * Email dl.0927.glenunga@schools.sa.edu.au
- * Call 8379 5629

We expect at least 97% of concerns to be resolved on your first contact.