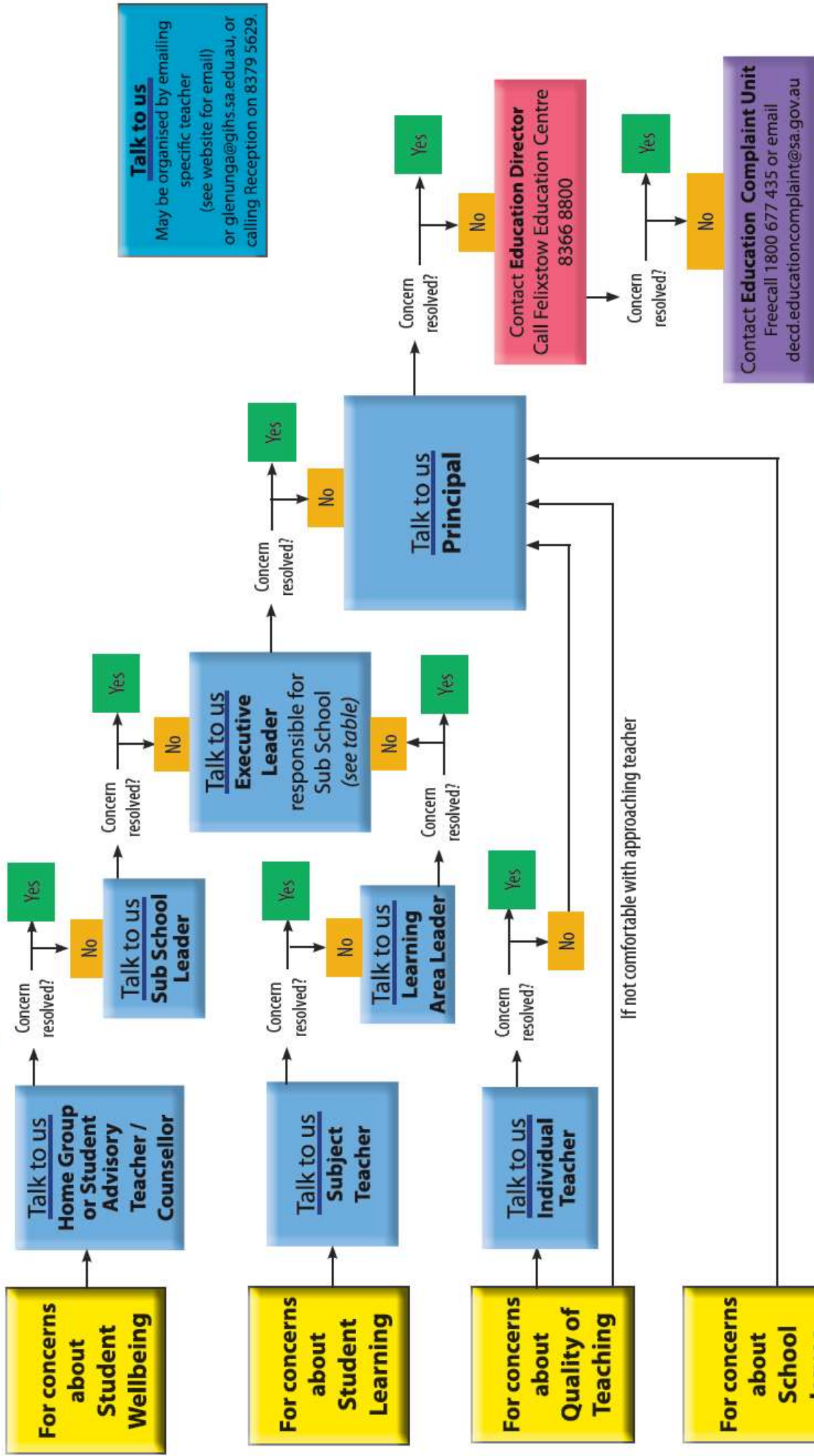




Consumer Complaints Management & Resolutions Flowchart 2017

<https://www.decd.sa.gov.au/department/about-department/contact-department/feedback-and-complaints-about-school-or-preschool>

We expect at least 90% of concerns to be resolved by your first contact



Talk to us
May be organised by emailing specific teacher (see website for email) or glenunga@gihs.sa.edu.au, or calling Reception on 8379 5629.

Advice & support
hotline: 1800 677 435